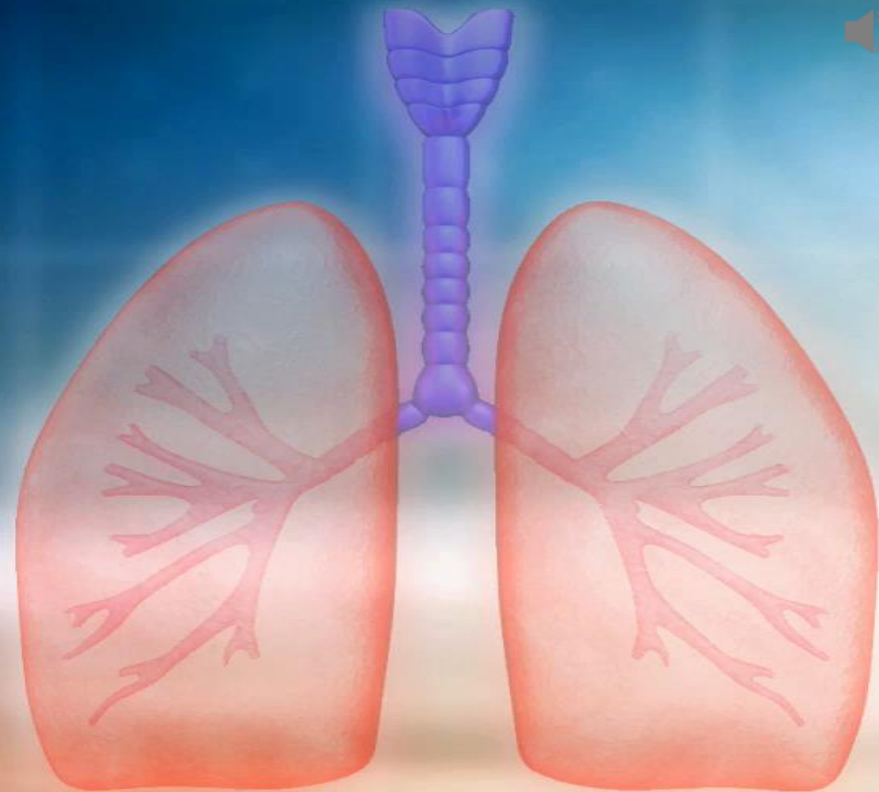


2500  
2250  
1750  
1500  
1250  
1000  
750  
500  
250  
mL



# Needle Cricothyroidotomy

Shane Driver NRP, FP-C, CCEMTP

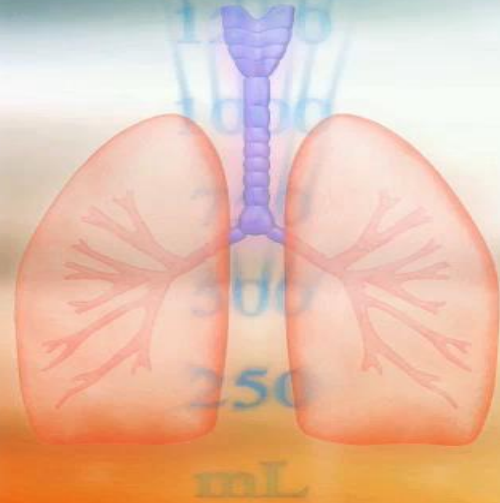




# Disclosure

Presentation is designed to meet the Guidelines of the ADPH/OEMST 8<sup>th</sup> Edition Protocols – January 2016 – Expanded Scope

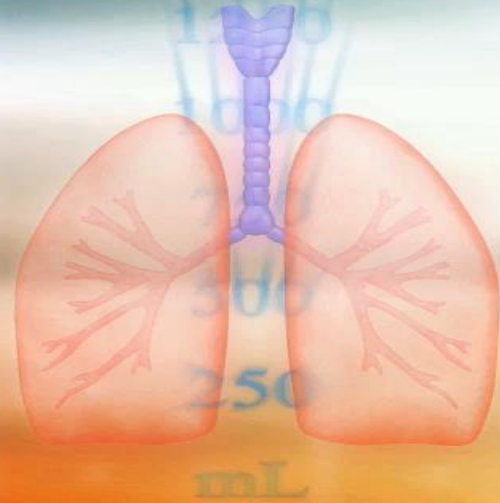
We do not endorse a specific product or vendor.





# Objectives

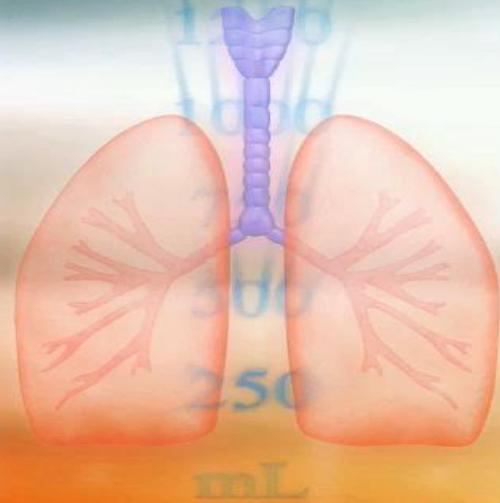
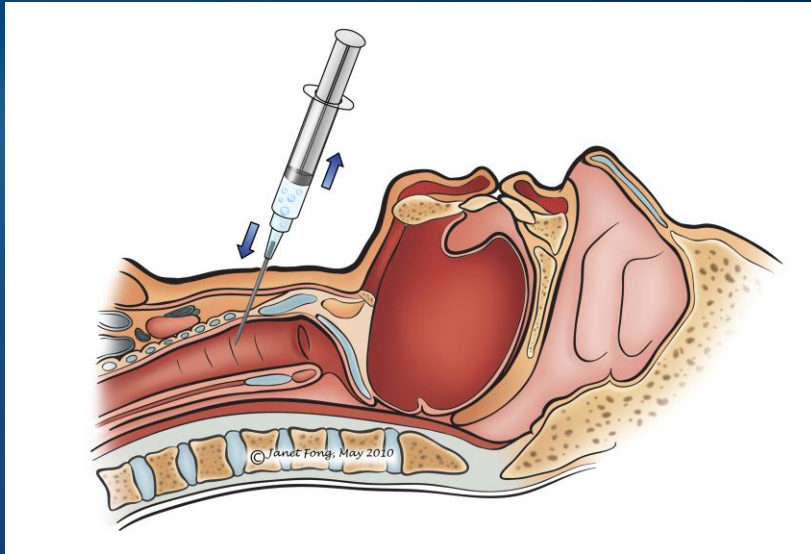
- Define
- Indications
- Precautions
- Equipment Needed
- Procedure
- Documentation





# Definition

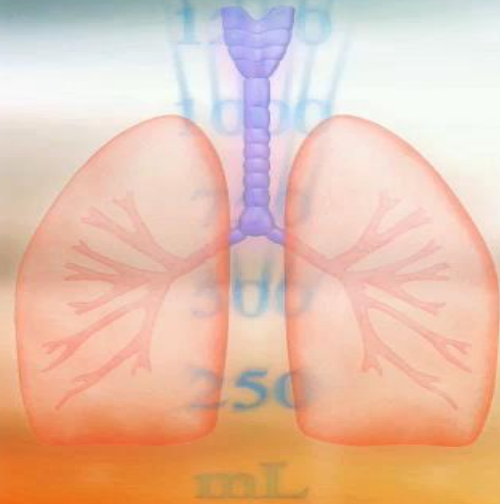
Passing an over-the-needle catheter through the cricothyroid membrane





# Indications

Management of an airway when standard airway procedures cannot be accomplished or have failed.



# Precautions

Laryngeal injury / Tracheal rupture

Anterior neck swelling that obscures anatomical landmarks

Anatomic anomalies or distortion of the larynx and trachea

Bleeding disorder



# Equipment Needed

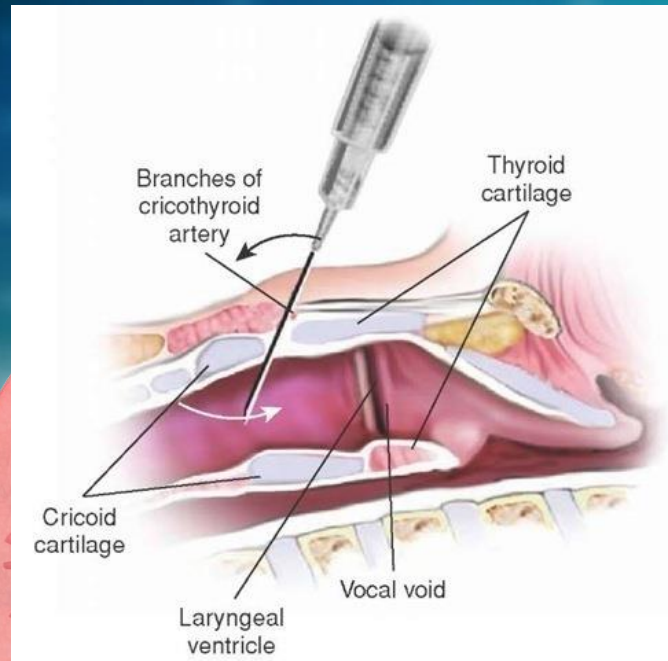
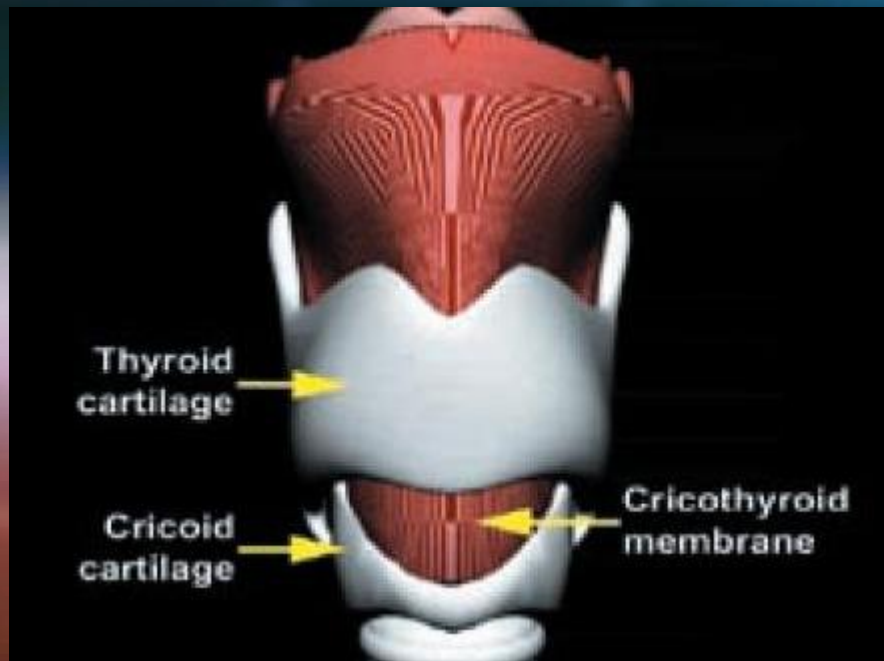
- Antiseptic Swab
- 14g Catheter Over Needle
- 5 cc Syringe
- Saline
- 15mm Adapter (3.0 ET Tube)
- BVM device
- High Concentration Oxygen
- Tape



Assemble all  
equipment  
before  
attempting

## Section Header

# PROCEDURE







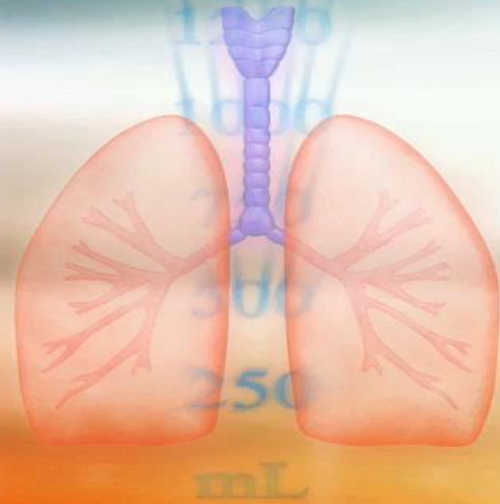
## TRANSPORT





# Documentation

- Why?
- Orders
- Complications
- Procedure
- Time
- Confirmation
- Patient Condition





# Thank You



ESEC, LLC Virtual and Online Classroom Systems  
[www.emergencyeducation.us](http://www.emergencyeducation.us)